



Digi AnywhereUSB Plus

Connect USB peripheral devices anywhere on a Local Area Network (LAN) via Ethernet or Wi-Fi without a locally-attached host computer

IoT business automation requires communication with various IT assets and peripherals located across an enterprise. **Digi AnywhereUSB[®] Plus** remote USB hubs give users the simplest and most direct connection options for existing equipment with a variety of USB 3.1 Gen 1 port options.

All models have Gigabit Ethernet support. 8- and 24-port models support 10 GB Ethernet with the option to use SFP+ connectors for fiber network connectivity. The 24-port models support dual Ethernet or dual SFP+ and optional Ethernet bonding for higher speeds and/or failover redundancy. Wi-Fi versions of the 8- and 24-port models are also available, providing Wi-Fi client or access point connectivity.

Digi AnywhereUSB 24 Plus is rack mountable with 24 USB 3.1 Gen 1 ports, while AnywhereUSB 8 Plus is desktop or rack mountable (with included rack ears) and AnywhereUSB 2 Plus is desktop or panel mountable with eight or two ports, respectively, and support for Gigabit Ethernet.

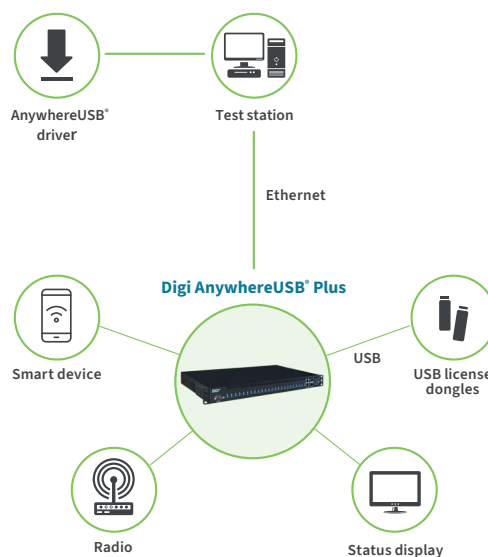
Digi AnywhereUSB Plus can be coupled with **Digi Remote Manager[®]**, a cloud-based device configuration and security management platform, to help users reduce downtime. An intuitive user experience makes installation smooth and easy with quick setup and configuration to monitor and maintain larger installations of remote Digi and third-party devices.

For enterprise and industrial customers who need remote or local USB ports and the higher speeds of USB 3.1 Gen 1 and Gigabit/10 Gigabit Ethernet, Digi AnywhereUSB Plus products give you an industry-leading connectivity solution.

Key features, benefits and applications

- Network-attached USB hubs easily connect USB peripheral devices to a PC from remote or virtual hosts
- Ideal for connecting USB devices over the network in virtualized environments such as VMware[®]
- AnywhereUSB 24 Plus is rack mountable with two power supplies and Ethernet connections for failover redundancy
- Access and monitor USB and serial devices over TCP/IP connection
- Supports multi-host connectivity for each USB port or group independently
- Built-in **Digi TrustFence[®]** for device security, secure encrypted connections, ongoing monitoring and support
- Supports **Digi Remote Manager** cloud-based management platform to deploy, monitor and manage devices
- 1-year **LifeCycle Assurance** with 24x7 Expert Support and Digi Remote Manager Premier included

Application example



Related Digi devices and software



Digi TX54



Digi ConnecPort[®] TS



Digi Connect IT[®] 16/48



Accessories



Digi Remote Manager[®]

Digi LifeCycle Assurance



Digi LifeCycle Assurance provides an enhanced level of service and support on new deployments of Digi AnywhereUSB® Plus, Digi Connect® EZ, and Digi Connect® IT 16/48 to provide security, reliability and speed, as well as ongoing device management.



Management

Digi Remote Manager®, our network orchestration platform, provides complete visibility and control, with configuration, remote monitoring, automation, security and OTA software update capabilities.



Device

High-performance, purpose-built Digi devices, with integrated software, designed to meet the requirements of a wide range of enterprise, industrial, medical and transportation use cases.



Technical Support

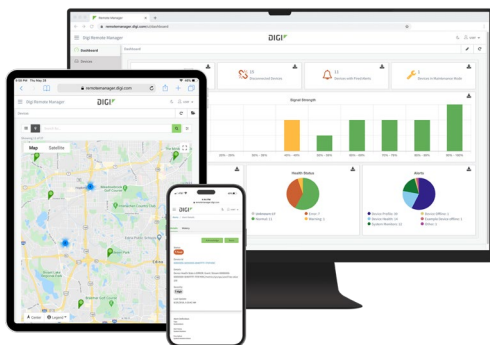
The support plan provides 24 x 7 x 365 tier 1 support with four-hour SLA for device and network troubleshooting to ensure your team can resolve issues quickly.



Warranty

Enjoy peace of mind with Digi's best-in-class warranty, covering your device for 5 years. Our technology transition support ensures that you can maximize your technology investment and mitigate risks effectively.

Digi Remote Manager



Digi Remote Manager (Digi RM) is a proven technology platform that brings networks to the next level, allowing networks — and the people who manage them — to work smarter. Digi RM transforms a multitude of dispersed IoT devices into a dynamic, intelligent network. It's easy to deploy, monitor and diagnose thousands of mission-critical devices from a single point of command on a desktop, tablet or phone. All the while, software-defined security diligently safeguards your entire Digi ecosystem.

[Learn more at **digi.com/digi-remote-manager**.](https://digi.com/digi-remote-manager)

Digi RM Capabilities

- Activate, monitor and diagnose your mission-critical devices through a single portal
- Schedule key operations — including firmware updates and file management — on a single device or on a group of devices, keeping your network functionality up-to-date and maintaining compliance standards
- Manage edge devices out-of-band via console terminal access
- Monitor equipment health and connectivity across deployments of any size
- Create detailed reports and enable real-time alerts for specified conditions
- Integrate device data through open APIs to gain deeper insights and control with third-party applications
- Report and alert on performance statistics, including connection history, signal quality, latency, data usage and packet loss

Digi RM Infrastructure and security

- Hosted in a commercial-grade cloud server environment that meets SOC 1®, SOC 2® and SOC 3® standards
- Superior availability, operating at 99.9% or greater uptime
- Open APIs available to support application development
- Comprehensive security controls in place to protect your data
- Member of the Center for Internet Security® (CIS®)
- Enables compliance with security frameworks like ISO27002, HIPAA, NIST and more
- Earned Skyhigh's CloudTrust™ Program highest rating of Enterprise-Ready

Digi TrustFence



Built-In Security. Delivered.

Designed for mission-critical applications, Digi TrustFence enables users to easily integrate device security, device identity, and data privacy capabilities into product design. Digi TrustFence security for IoT devices is designed to grow and adapt with new and evolving threats.

[Learn more at **digi.com/trustfence**.](https://digi.com/trustfence)

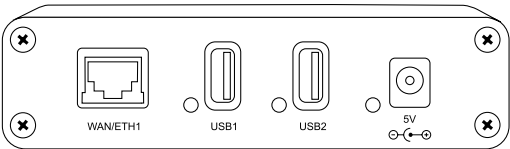
Digi TrustFence security features in AnywhereUSB Plus

Digi TrustFence is a device security framework that simplifies the process of securing connected devices.

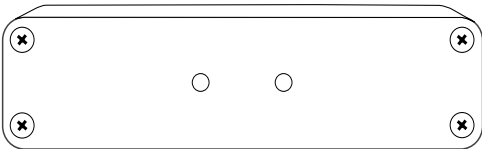
- Unique password for each hub
- Configurable network service port numbers
- Secure access and authentication to the web UI and CLI
- One password, one permission level
- Selectively enable and disable network services such as mDNS, HTTP/HTTPS, and SSH
- Encrypted access to AnywhereUSB Plus traffic: Access to the USB-over-IP traffic is encrypted and authenticated by default and cannot be disabled
- Protected by the Digi TrustFence framework
- Manage Digi AnywhereUSB Plus remotely and securely with Digi Remote Manager, a comprehensive IoT device management application

Product Images

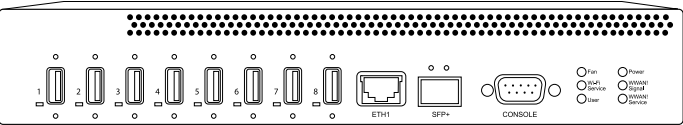
Digi AnywhereUSB 2 Plus — front



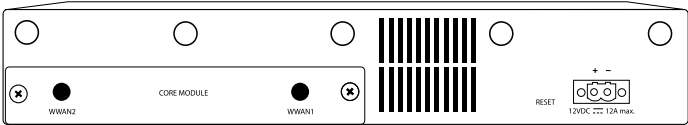
Digi AnywhereUSB 2 Plus — back



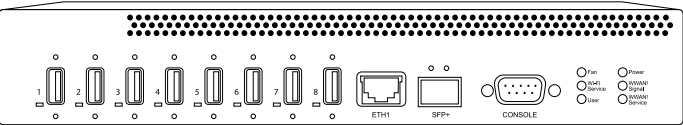
Digi AnywhereUSB 8 Plus — front



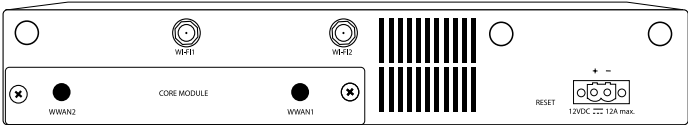
Digi AnywhereUSB 8 Plus — back



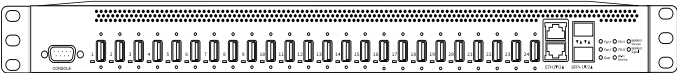
Digi AnywhereUSB 8 Plus with Wi-Fi — front



Digi AnywhereUSB 8 Plus with Wi-Fi — back



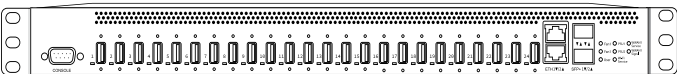
Digi AnywhereUSB 24 Plus — front



Digi AnywhereUSB 24 Plus — back



Digi AnywhereUSB 24 Plus with Wi-Fi — front



Digi AnywhereUSB 24 Plus with Wi-Fi — back



Specifications	Digi AnywhereUSB 2 Plus Digi AnywhereUSB 8 Plus Digi AnywhereUSB 24 Plus		
CELLULAR			
MODULE SUPPORT	-	(1) Digi CORE® modem compliant socket	
WI-FI (ON W300 MODELS ONLY)			
CONNECTIVITY		2 x 2 MIMO 2.4/5 GHz: 802.11 b/g/n 2.4 GHz or 802.11 n/a/ac 5 GHz	
ANTENNAS		RPSMA 2 x 2 MIMO, 2.4 and 5 GHz, 3 dBi gain	
SECURITY		Open, enhanced open, WPA, WPA2, WPA3; personal, enterprise	
MODES		Wi-Fi client, Wi-Fi access point	
SOFTWARE AND MANAGEMENT			
REMOTE MANAGEMENT	Digi Remote Manager (cloud based)		
LOCAL MANAGEMENT	WebUI (HTTP/HTTPS); CLI (Console, SSH)		
OPERATING SYSTEMS	Windows®: Windows 7, 8.1, 10, 11; Windows Server® 2012-R2, 2016, 2019, 2022; Linux®: Ubuntu® (LTS versions tested 18.04, 20.04, 22.04, 24.04), Debian® (LTS versions tested 10.13, 11.9, 12.5) and Red Hat®/AlmaLinux/Rocky (LTS versions tested 8.10 and 9.4)		
PROTOCOLS	Supports multi-host connectivity for each USB port or group independently		
MEMORY	512 MB RAM, 4 GB flash (eMMC)	2 GB RAM, 4 GB flash (eMMC)	
NETWORK			
ETHERNET	(1) RJ-45; 10 M/100 M/1 G	(1) RJ-45; 10 M/100 M/1 G/10 G	(2) RJ-45; 10 M/100 M/1 G/10 G
SFP+	-	(1) SFP+ socket	(2) SFP+ sockets
CONNECTORS			
CONSOLE	-	(1) DB09M; RS-232 DTE	
USB	(2) USB 3.1 Gen 1 Type A	(8) USB 3.1 Gen 1 Type A	(24) USB 3.1 Gen 1 Type A
USB PORT POWER	1.8 A per port (simultaneous)	1 A per port (simultaneous)	
PHYSICAL			
DIMENSIONS (L X W X H)	118 mm x 74 mm x 30 mm (4.6 in x 2.9 in x 1.2 in)	260mm x 160 mm x 44.45 mm (10 in x 6 in x 1.75 in)	450.85 mm x 255 mm x 44.45 mm (17.75 in x 10 in x 1.75 in)
WEIGHT	0.38 kg (0.84 lb)	1.58 kg (3.48 lb)	4.7 kg (10.36 lb)
STATUS LEDS	Ethernet, 2x USB, power	Ethernet, SFP+, 8x USB, power, fan, user, 2x WWAN (if CORE module is inserted), Wi-Fi (on Wi-Fi models)	2x Ethernet, 2x SFP+, 24 USB, 2x PSU, 2x fan, user, 2x WWAN (if CORE module is inserted), Wi-Fi (on Wi-Fi models)
POWER REQUIREMENTS			
POWER INPUT	5 V, 5 A max	12 VDC, 12 A max	Dual 100-240 V, 3 A max (dual supplies for redundancy)
POWER CONSUMPTION	25 watts max	98.5 watts max	157.7 watts max
ENVIRONMENTAL			
OPERATING TEMPERATURE	0 °C to 40 °C (32 °F to 104 °F)	0 °C to 55 °C (32 °F to 131 °F); 0 °C to 40 °C (32 °F to 104 °F) on Wi-Fi models	
RELATIVE HUMIDITY	5% to 95% (non-condensing)		
APPROVALS*			
SAFETY*	UL 62368/60950, EN 62368, IEC 62368, CSA 22.2 62368 -1		
EMISSIONS/IMMUNITY*	CE, FCC Part 15 Class B, AS/NZS CISPR 22, EN 55024, EN 55032		
WARRANTY			
PRODUCT WARRANTY	5-year		
TECHNICAL SUPPORT	1-year LifeCycle Assurance with 24x7 Expert Support included		

*Visit digi.com/resources/certifications for latest updates.

Enterprise Software	Description
PROTOCOL SUPPORT	HTTPS, FTP, SFTP, TLS 1.2, SMTP, SSH and CLI for web management; remote management via Digi Remote Manager
SECURITY/VPN	TLS 1.2, SSH, HTTPS
ROUTING/FAILOVER	Ethernet bonding (only for AnywhereUSB 24 Plus)
OTHER PROTOCOLS	DHCP

Part Numbers

Digi AnywhereUSB Plus

Digi AnywhereUSB 2 Plus	
AW02-G300-GLB	Digi AnywhereUSB 2 Plus — dual USB 3.1 Gen 1 ports, single 10 M/100 M/1 G Ethernet, 5 VDC, includes power supply (760000965)
AW02-G300	Digi AnywhereUSB 2 Plus — dual USB 3.1 Gen 1 ports, single 10 M/100 M/1 G Ethernet, 5 VDC (power supply sold separately)*
Digi AnywhereUSB 8 Plus	
AW08-G300	Digi AnywhereUSB 8 Plus — eight USB 3.1 Gen 1 ports, single 10 M/100 M/1 G/10 G Ethernet, single SFP+, 12 VDC
AW08-W300	Digi AnywhereUSB 8 Plus with Wi-Fi — eight USB 3.1 Gen 1 ports, single 10 M/100 M/1 G/10 G Ethernet, Wi-Fi, single SFP+, 12 VDC
Digi AnywhereUSB 24 Plus	
AW24-G300	Digi AnywhereUSB 24 Plus — 24 USB 3.1 Gen 1 ports, dual 10 M/100 M/1 G/10 G Ethernet, dual SFP+, dual power 100-240 VAC
AW24-W300	Digi AnywhereUSB 24 Plus with Wi-Fi — 24 USB 3.1 Gen 1 ports, dual 10 M/100 M/1 G/10 G Ethernet, Wi-Fi, dual SFP+, dual power 100-240 VAC

Part Numbers

Digi AnywhereUSB 2 Plus Accessories

Digi AnywhereUSB 2 Plus Power Supply	
76000965	AC power supply — extended temperature, universal plugs (US, EU, UK, AU) to 5 VDC - 2.5 mm locking barrel plug (6 A max)*
Digi AnywhereUSB 2 Plus DIN Mounting Bracket	
76000682	DIN rail mounting kit for AnywhereUSB 2 Plus

*Recommended power supply for AnywhereUSB 2 Plus, provides full USB charging capability of 1.8 A per port.

Part Numbers

Digi LifeCycle Assurance

DIGI-IM-LCA-1YR-EXT	Digi LifeCycle Assurance — 1-year extension
DIGI-IM-LCA-2YR-EXT	Digi LifeCycle Assurance — 2-year extension
DIGI-IM-LCA-3YR-EXT	Digi LifeCycle Assurance — 3-year extension
DIGI-IM-LCA-4YR-EXT	Digi LifeCycle Assurance — 4-year extension
DIGI-IM-LCA-RENEWAL	Digi LifeCycle Assurance renewal



1-year **LifeCycle Assurance** with 24x7 Expert Support and Digi Remote Manager Premier included with Digi AnywhereUSB Plus models.

For more information, please visit digi.com.



For more information about Digi AnywhereUSB Plus, visit digi.com/anywhereusb-plus.

877-912-3444 | 952-912-3444

